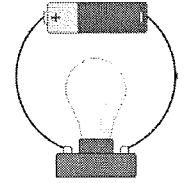


ELECTRICITY STATION 1 READ AND COMPREHEND



Section 1

Electricity is a form of energy formed inside some particles of matter. Electrical energy travels through **conductors**, which allow the electricity to move through it. Metals like copper and gold are conductors. **Insulators**, like rubber and plastic, do not allow electricity to pass through.

Section 2

Electricity flows from a source of energy to power computers, lamps, and other electric appliances. The **source** of energy is where the electrical energy comes from. In basic circuits we make in class, the source of energy is a battery. Electrical energy can be changed into light, heat, magnetic, and sound energy. Electric current flows through a circuit, allowing electric items to work.

Section 3

Think about a battery, 2 wires, and a light bulb. When the wires are both connected to the battery and the light bulb, a closed circuit is formed. A closed circuit allows electricity to flow from the battery to the light bulb through the wires.

Section 4

Did you know that a simple iron nail can become a magnet? When a battery is connected to the iron nail using a wire coiled around the nail, an **electromagnet** is created. The iron nail becomes a magnet when the battery is attached.